



EXCHANGE

NEWSLETTER OF THE INTERNATIONAL FACILITY MANAGEMENT ASSOCIATION - MINNEAPOLIS / SAINT PAUL CHAPTER



CONTENTS

- 02. President's Letter
.....
- 04. Golf Tournament
.....
- 06. Build Your Core 2.0
.....
- 07. IFMA RICS Collaboration
.....
- 08. New Member Social Recap
.....
- 09. Recognition
.....
- 10. Member Profile

JUNE CHAPTER MEETING

Kraus-Anderson

About the Building and Tour:

Kraus-Anderson (KA) has been a part of Minneapolis' downtown fabric for over 120 years and has called the block bounded by Eighth and Ninth streets, Portland and Fifth avenues its home since the 1940s. The new 5-story, 105,000 sq. ft. headquarters was the first phase of a redevelopment of the KA Block that underscores and elevates the company's longtime commitment to downtown. The headquarters consolidates the cultures of three distinct offices, once spread throughout the Minneapolis metro and surrounding suburbs, and creates a modern, vibrant workplace for 300 employees that blends high-tech efficiencies with legacy features.

More on page 3

UPCOMING EVENTS:



June Chapter Meeting
June 6, 2018



Build Your Core 2.0
June 21, 2018



Golf Tournament
July 10, 2018



Summer Social
August 16, 2018

PRESIDENT'S LETTER



THANK YOU

As the Chapter's 31st President, I started my term two years ago thanking all of our Chapter's Past Presidents for their hard work and passionate leadership. As I end my term this month, I would like to recognize and thank all of our Chapter's volunteers for the successful year that we had. Thanks to you, we were able to accomplish a number of things.

This list includes:

- Annual Golf Tournament that always offers the opportunity for members to spend a fun afternoon together.
- Monthly chapter meetings that offers members another opportunity to network and learn something new from a speaker or tour.
- Providing our members with a means of continuing their education through "Build Your Core" events.
- Improving the look, feel and functionality of our Chapter's website and making it easier to register for events and track member information.

- Financial stability. The co-chairs that make up the BOD for the Chapter have done an excellent job delivering high quality services within their designated budgets.

Of course there is always more work remaining, but for now it's time to step back and have some fun. I look forward to seeing you at one of the following upcoming events:

- Chapter meeting and Awards Ceremony, Wednesday, June 6th at **Kraus-Anderson Construction**.
- Annual Golf Tournament – being held on Tuesday, July 10th at the Legends Golf Club in Prior Lake.

Lastly, I would like to welcome Laura Magnuson as the next Chapter President when she starts her term on July 1, 2018. Laura is an outstanding leader that will continue to make our Chapter even better in the coming years.

Thank you again everyone for your hard work and passionate efforts to make the Minneapolis/St. Paul Chapter one of the nation's best IFMA Chapters!

Enjoy your summer!

Improve the effectiveness of the workplace based on easy to understand, actionable data.

Get in touch to learn how we can help quantify workspace experiences by showing how, when and why spaces are being used.

Suzie Heiam, Workplace Consultant
Suzie.Heiam@atmosphereci.com

ATMOSPHERE
COMMERCIAL INTERIORS

#FABWORKLAB

www.atmosphereci.com



Greg Wood, SFP, CFM

Did you Know?

On average, IFMA Credentials lead to a \$6,000 salary increase within first year!

For more info [click here](#)

JUNE CHAPTER MEETING



KRAUS-ANDERSON

Date:

Wednesday, June 6, 2018

Time:

3:00 – 5:00 pm

Cost:

- Members: \$25
 - Non-Members: \$35
- \$10 increase in fees beginning Friday, June 1st*

Location:

Kraus-Anderson
501 South Eighth Street
Minneapolis, MN 55404

Parking:

Parking is available on the Normandy's Hotels surface lot across 5th Ave from the KA headquarters. Access for the lot is on 9th Street.

Parking is also available at the Centre Village Parking Ramp also on 5th Ave just past the KA Block.

Don't forget to join us after the tour in the Brewers Den (2nd floor) at Finnegans for some food, drinks and networking!

[Click here to register](#)



Board Members

PRESIDENT

Greg Wood, SFP, CFM

VICE PRESIDENT

Laura Magnuson, CFM

IMMEDIATE PAST PRESIDENT

Rhonda Rezac, FMP

GOLF TOURNAMENT



Date:

July 10, 2018

Time:

9:00 am – 6:00 pm

Location:

Legends Golf Course,
Prior Lake

Cost:

- Individual Members: \$130
- Individual Non-Members: \$150
- Member Foursome: \$500
(*foursome must include 1 member & that member must register the foursome*)
- Non-Member Foursome: \$600
- Member – Beanbag Tournament & Dinner: \$50 – ***New This Year!***
- Non-Member – Beanbag Tournament & Dinner: \$60 – ***New This Year!***
- Member – Dinner Only: \$35
- Non-Member – Dinner Only: \$45

Golf Registration Includes:

- 18 holes of golf
- Golf Cart
- Lunch
- Dinner
- Drink Ticket

Time:

9:30 am: Registration & Lunch (grab-n-go)
11:00 am: Shotgun Start
2:30/3:00 pm: Start of Beanbag Tournament
4:30 pm: Cocktail in the Clubhouse/19th Hole Party
6:00 pm: Dinner

Door & Raffle Prizes:

If you are interested in donating a door prize or prize for the raffle drawing please contact [Mary Pat Nielson](#).

Wine & Whiskey is back! We will be holding a raffle for a wine & whiskey wall. If you are interested in donating please bring your donations with you on the day of the golf tournament or you can drop them off at the IFMA office.

Please remember to attach a business card to all donations.

Registration:

[Click here](#) to log into your IFMA account and register yourself or foursome today!

Questions?

Please contact [Mary Pat Nielson](#) or call the IFMA office at 952-564-3052.



GOLF SPONSORSHIP OPPORTUNITIES



Thank you to our
Title Sponsor:

Milliken™

There are plenty of ways to get involved and sponsor at the IFMA golf tournament. Below is a list of available sponsorships, but act fast! These won't last long!

- Dinner Sponsor - \$500
- Drink Sponsor - \$500 (1 Left!)
- Oasis Sponsor - \$500
- Water Sponsor - \$350
- Drive Range Sponsor - \$250
- And many more!

[Click here](#) to see a full list of all the sponsorships offered and their benefits.

[Click here](#) to take the online golf sponsor form and select your sponsorship today!

We hope to see you on Tuesday, July 10th!

Thank you to our 2018 Hole Sponsors:

1. ABM Onsite Services
2. Aerotek
3. Atmosphere Commercial Interiors/A&M Business Interiors
4. Bartlett Tree Experts
5. City Wide Maintenance
6. CFS Interior & Flooring
7. CoBeck Construction Company
8. CORT
9. Cresa
10. Harris Mechanical Service
11. Harvard
12. Horizon Roofing
13. INSPEC
14. Mohagen/Hansen Architectural Group
15. Prevolv
16. Restoration Systems, Inc.
17. Solid Surface Care
18. TruNorth Painting



CUSHMAN & WAKEFIELD IS PROUD TO RECEIVE THE

**2018 ENERGY STAR
PARTNER OF THE YEAR**

SUSTAINED EXCELLENCE AWARD

cushmanwakefield.com/action



IDEAS INTO ACTION



**Great space helps
attract the right talent.**
Let us find your perfect fit.

cresa-msp.com

BUILD YOUR CORE 2.0



OPERATIONS & MAINTENANCE

Date:

Thursday, June 21, 2018

Cost:

\$50 / person

Time:

11:30 am - Lunch

12:00 pm to 2 pm - presentation
with tour.

Location:

Allianz Life
5701 Golden Hills Drive
Minneapolis, MN 55416



Chris Barrett, FMP
Director Building
Operations, Allianz Life

Chris is a Facilities Management graduate from Colorado State University-Pueblo and has attained the IFMA FMP certification. During his 14 year career at Target Corporation and Allianz Life, Chris oversees the CADFM, IWMS, BAS, Security, and EMS technology systems. Chris has served on the IFMA Education & Academic Committees, and is currently Co-Chair of the Program Committee for our Chapter.

Everyone is welcome!

Please **preregister** for Security Requirements!

Advanced Registration Required

Registration Deadline:

Tuesday June 19, 2018

[Click here to register](#)



(651) 602-6500
www.hmcc.com



Harris Companies is one of America's most trusted mechanical contractors. Our Twin Cities service team provides maintenance and installation programs that reduce energy and operating costs. Schedule your comprehensive building survey today!

Leadership through innovative & responsible solutions

BUILDING ENDURING

RELATIONSHIPS &

STRONG COMMUNITIES

KRAUS-ANDERSON
WWW.KRAUSANDERSON.COM

IFMA RICS COLLABORATION



William M. O'Neill, CFM
Chair, Global Board of
Directors, IFMA

On Thursday, April 8, I had the opportunity to talk with a group of chapter members about the IFMA RICS Collaboration. This collaboration was agreed to and signed on April 16, 2016 for five years.

There have been questions about this collaboration I was asked to address as follows:

Who are RICS?

RICS is The Royal Institute of Chartered Surveyors whose

headquarters are in London England at Parliament Square. They have 125,000 members and are celebrating their 150 anniversary this year. Their areas of qualifying their members are Land, Property and Construction. All members must be qualified to belong and be employed. Membership is awarded after you are qualified in one of 3 areas, Associate RICS, Member RICS and Fellow RICS.

You can learn more about the details of RICS at www.rics.org/us/

After entering the site click on Stay Updated: Facility Management to read more about IFMA and RICS collaborative, particularly in the Raising the Bar 3 document dated March 20, 2017

Is there a plan to merger?

No. This agreement is a Collaboration where we work together on Events, Membership, and Professional Development. RICS and IFMA cannot merge. RICS is a chartered organization through the Monarchy of England; IFMA is a non-profit organization registered in Michigan and headquartered in Houston Texas.

Why are we collaborating?

- Advance **standards and professionalism** in FM worldwide
- **Raise the profile** of FM, giving a greater voice and increased status to the profession
- Foster a more inclusive, robust global FM **knowledge-sharing** community
- Create a one-stop shop for FM **professional development** needs and a suite of credentials for entry into and advancement in the FM discipline.

Are IFMA Credentials being minimized by the collaboration?

A important, beneficial action from the Collaboration, has been the creation of a Suite of Credentials.

This suite offers options to FM Professions to continue to pursue only your IFMA Credentials/Certifications, or to become qualified as a RICS member. For example, if you are a CFM, you need to only take the RICS Ethics test and pass to be qualified as AssocRICS. Also, the CFM does provide you access to enter MRICS qualification process.

As an FMP, you can apply for MRICS if you meet the RICS education and experience requirements.

For more information go to the RICS website at www.rics.org/us/. Click on Stay Updated: Facility Management, and click on Suite of Qualifications.

IFMA continues to invest in the CFM, SFP, FMP, and FM Essentials to keep them current and meeting the industry highest standard. SFP and FMP are currently ANSI certified and IFMA is in the process of having CFM ISO Certified. It does not get any higher than that in the Credential and Certification areas.

I want to repeat, because it is important, that we are collaborating to advance FM standards and professionalism, raise FM profile, create knowledge sharing and collaborative environments and be a one stop shop for FM professional needs.

This collaboration could not have been made possible without the incredible work of IFMA volunteers, staff and board to build the leading FM organization globally. Our current member model shows that 75 percent of members are North American, 25 percent are global, and growing at an increasing rate. We are collaboration with RICS to position IFMA to be the global leader for relevant FM profession events, networking, professional development.

Please feel free to contact me at oneillb642@gmail.com with questions or requests.

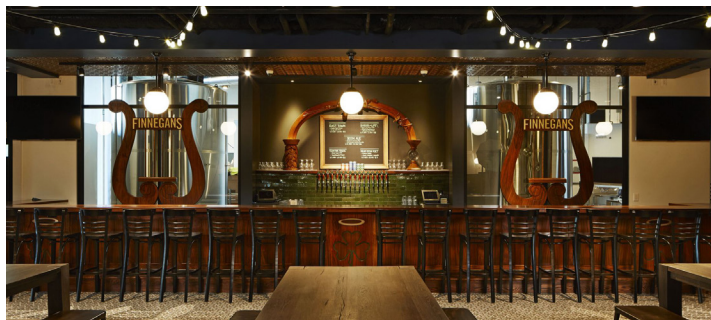
Thank you.

Regards,

Bill O'Neill
Chair, IFMA Global Board of Directors

NEW MEMBER SOCIAL RECAP

The Membership Committee would like to extend its thanks and appreciation to all the members who attended the New Member Social held on May 8th at Finnegan's Taproom in Mpls. Attendees got to network with one another, hear about opportunities to become more involved in the Chapter by volunteering on a Board committee, and try out Finnegan's beverage selections. It was a fun event and great way for new and not-so-new members to meet one another.



SAVE THE DATE FOR THE SUMMER SOCIAL

Thursday, August 16th / 4:30 – 6:30 pm



Can Can Wonderland

755 Prior Ave North, #004
St. Paul, MN 55104

Registration will open soon
– check the website for details!

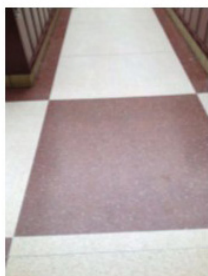
We hope to see you there!



Let CFS rejuvenate your terrazzo floors with a micron coating!

- Save time and money
- Improve appearance
- Easier, faster cleaning
- Dries in minutes
- NEVER strip again

Beautiful floors!
Improves slip resistance!



BEFORE



AFTER

At the end of the day, building relationships, that's what we do.

(651) 681-8100 • 940 Apollo Road, Ste 110 • Eagan, MN 55121

www.cfs-floors.com

Evolving your work environment.

2635 University Ave. West, Suite #120, St. Paul, MN 55114



PRODUCTS

Architectural Walls + Open Systems + Private Offices + Filing & Seating

SERVICES

Design & Specifications + Installation & Reconfiguration + Asset Mgmt.

Scott Gilbertson

Director of Business Development
Direct: 651.789.5560
Cell: 612.581.7363
sgilbertson@prevolv.com
www.prevolv.com



RECOGNITION



MEMBER ANNIVERSARIES

20 YEARS

Peter Hillman, CFM
CBRE

Carey Sanders
CORT Business Services

Stephanie Peterson
Eaton

15 YEARS

Linda Strande
Tandus Centiva

10 YEARS

Chuck Johnson, CFM

Kevin Karow

1 YEAR

Frank Fidler
Blue Cross Blue Shield of MN

Joshua Schimmelpfennig
Cutting Edge Property Maintenance

Shilo Scherer
Xcel Energy

William Beckfeld
Vanguard Construction

James Fitzgerald
People Serving People

Dan Perry
Prime General Contractors LLC

Tayton Eggenberger
Restoration Systems Inc.

Brain Kimmes
Minnesota Timberwolves and Lynx

Len Swanson
Slumberland, Inc

John Johnson

Joan Meyers
Gensler

Shelley Finn
Honeywell

Scott Winton
University of MN - Facilities Management/
Hennepin County Facility Services

William Battleson
Target Corporation

Jane DeKraay

Marte Byrne
AMS CAD+CAFM Solutions



NEW MEMBERS

Julie Larson
3M Company

Kyle Stember
Washington County

Paul Benson
Palen Kimball

Christopher Kimball
FM:Systems, Inc.

Jeremy Wagner
Harris Controls

Dan Total
TCF National Bank

Jeff Callander
Select Commercial Services

Wendy Peterson
FMA Hennepin County

John Deziel
BrightView Landscape Services

Joey Metzger
CFM Bluestem Brands

Zach Vierling
Hempel Companies



CHAPTER SPONSORS

PLATINUM

ABM Onsite Services
Bartlett Tree Experts
CFS Interior & Flooring
City Wide Maintenance
CORT
Cresa
Cushman & Wakefield/NorthMarq
Harvard
Horizon Roofing, Inc.
Prevolv
Solid Surface Care

GOLD

Alliance
Atmopshere Commercial Interiors
Harris Mechanical
INSPEC
Kraus-Anderson Construction
Marsden Bldg Maintenance, LLC
Mohagen/Hansen Architectural Group
Prescription Landscape
RSP Architects

SILVER

Commercial Furniture Services
Beltmann Group Inc.
FM: Systems, Inc.
SwedeBro

THANK YOU to those who have contributed to the IFMA sponsorship. With you as our partners, we're a stronger organization.

MEMBER PROFILE



SUE RAICHE – A&M BUSINESS INTERIOR SERVICES – CLIENT SERVICES MANAGER



Path to Profession:

I have an interior design degree from the U of North Carolina- Greensboro. My father was a strong influence as a furniture rep. I began my career in residential design, followed by a commercial furniture dealership designer/ sales role on the East Coast.

In relocating to MN, I worked in several temporary design roles, including Lee Data Corporation, Planning and Design, and Ellerbe, (before Becket and now

AECOM). Like many of us, I “fell” into Facility Management at ADC Telecommunications. My title was Corporate Designer, as no one in the A&D community would know what a facility designer was at that time.

I recently managed Facility Planning & Design team at Carlson Companies. Having walked in the shoes of the client, I now support the Sales and Business Development efforts at A&M.

IFMA Involvement:

Rick Palmer, one of our MSP Chapter founding fathers, was my director during my ADC career, and encouraged IFMA involvement. We attended many conferences, now rebranded as World Workplace.

I have been a member of the PR Committee, past Chapter Secretary, & participated in IFMA Cares. Currently, I co- chair the Professional Development Committee. While on this committee, we implemented the Scholarship Endowment for the

U of MN in support of our FM degree program and developed the Build Your Core education series.

One of the highlights of my IFMA career was presenting our MSP Chapter history with another founding father, Bob Walsh, during our Chapter’s 30 Year Celebration in 2014! Get ready for our 35th anniversary celebration in 2019!

Recently Completed Project:

In my current role, I manage our Business Development opportunities and am excited to see the growth in our environmentally friendly furniture disposal business! We recycled approximately 2,500 TONS of steel last year!

Due to my past Facilities career, I am currently supporting a large furniture and staff move at the request of the client! Never underestimate the value of your past experiences!

Family:

My husband, Mark, and I have 3 daughters and 2 granddaughters! Our world is very PINK!

For fun, you will find us boating on the river in the summer. We enjoy wine tastings. International travel is always on the bucket list!

Little Known Personal Fact:

I traveled to Cuba in 2016 before restrictions were imposed on US tourists. Recently, we chartered our own boat though the Islands of Croatia and survived a Bora!

Last Good Read:

I just finished reading *The Cuban Affair*, by Nelson DeMille, recommended by a fellow traveler to Cuba.

RSP i_SPACE

Building confidence.



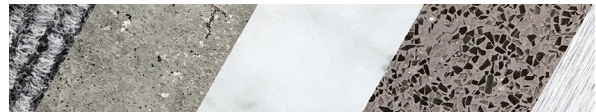
Work smarter, not harder, with I.T.

Things can get lost in translation with I.T. Especially when you’re implementing an IWMS for a large organization, like HealthPartners. Learn how we navigated their unfamiliar I.T. landscape, found efficiencies and better prepared their facilities for the future.

Click to learn more.



rsparch.com



ALL SURFACES,
ONE SOURCE.

SOLID[®]

CARE FOR EVERY SURFACE



CHAD STOUT 612.363.7660

solidcare.com | cstout@solidcare.com

NOW, ALL YOUR FLOOR CARE SOLUTIONS HAVE ONE THING IN COMMON, THEY'RE SOLID[®].



Facility Services, Inc. (FSI) and SOLID[®] have merged to become one source for all hard and soft surface care.