



EXCHANGE

NEWSLETTER OF THE INTERNATIONAL FACILITY MANAGEMENT ASSOCIATION - MINNEAPOLIS / SAINT PAUL CHAPTER



CONTENTS

- 02. Chapter Leadership Updates
- 03. New Membership Co-Chairs
- 04. Program Updates
- 05. World Workplace
- 06. Prevolv
- 07. UMN & Dunwoody Courses / CFM Credentials
- 08. Virtual Roundtables
- 09. ServiceMaster
- 10. Golf Tournament
- 11. Member Profile
- 12. Recognition
- 13. Chapter Sponsors

PRESIDENT'S LETTER

In keeping with the new world we are in and all things digital, please enjoy a video message from our President, Jon Heaton! Click the button below and enjoy!

Jon Heaton
Bartlett Tree Experts



[Click here to watch President's Message](#)

UPCOMING EVENTS:



August Chapter Webinar

August 25, 2020



Virtual Roundtables

Sept. 10 / Sept. 24



September Deep Dive

September 16, 2020



Annual Golf Tournament

September 29, 2020



October Chapter Meeting

October 14, 2020

CHAPTER LEADERSHIP UPDATES



On July 1st, Jon Heaton, with Bartlett Tree Experts, began his two-year term as President of the Minneapolis/St. Paul Chapter of IFMA. He is joined by Laura Magnuson, with Cushman & Wakefield, now the Immediate Past President supporting and mentoring Jon in his new Presidential duties, Chad Stout, with SOLID Surface Care, continuing as Treasurer, and Mark Chauvin, with Wiss Janney Elstner Associates, as Secretary. Thank you all for your continued work to make this a great Chapter.

IFMA MSP is also pleased to welcome our newly elected Vice President to the Executive Board, Trena Ross with Hennepin County. Trena recently served on the Board as a co-chair for the Academic Outreach committee and brings her knowledge and experience as a Senior Facilities Operations Manager at Hennepin County to our Chapter.

We would also like to thank outgoing Immediate Past President, Greg Wood with Washington County, for his years of volunteering with our local MSP Chapter of IFMA. He is still an active member supporting IFMA and providing valuable leadership in our industry.

And thank you to all of our members for your continued support in this new way of working, learning and networking. IFMA MSP will continue to strive to bring you the best education and networking opportunities as we evolve to meet our member's needs. Feel free to reach out to anyone on the Executive Committee above with any feedback.

Jon Heaton
Bartlett Tree Experts
President



Trena Ross, CFM
Hennepin County
Vice President



Chad Stout
SOLID Surface Care
Treasurer



Mark Chauvin
Wiss Janney Elstner Associates
Secretary



Laura Magnuson, CFM
Cushman & Wakefield
Immediate Past President



Greg Wood, SFP, CFM
Washington County
Outgoing Immediate Past President



Executive Committee

PRESIDENT
Jon Heaton

VICE PRESIDENT
Trena Ross, CFM

TREASURER
Chad Stout

SECRETARY
Mark Chauvin

IMMEDIATE PAST PRESIDENT
Laura Magnuson, CFM

“
SINCE 1952, WE'VE PROVIDED
FACILITY SERVICE SOLUTIONS THAT
COVER YOU FROM ROOFS TO ROOTS.
- Guy Mingo, CEO, Marsden Services

MARSDEN

INTEGRITY. INTELLIGENCE. INNOVATION.

Jen Klein
651-216-6084
jklein@marsden.com
marsdenbuildingmaintenance.com

NEW MEMBERSHIP CO-CHAIR ANNOUNCEMENT



The membership committee is pleased to announce that we have two new co-chairs taking over the duties in the membership committee. They are Eric Rausch & Allen Witt.

Eric Rausch is a Workplace Executive with Suddath Relocation Systems – a commercial relocation company here in the Twin Cities marketplace. He has been with IFMA for almost three years and been part of the membership committee for two years. He is looking forward to taking on this new role and continuing to help the organization grow and to gain more personal relationships with everyone in the MSP Chapter!

Allen Witt moved to Minnesota in 2018 and started at Terracon – a Consulting Engineering firm that provides Environmental, Facilities, Geotechnical and Material Testing services. He joined IFMA MSP in 2018 and immediately joined the Membership Committee.

They are looking forward to providing more information regarding buddy updates, new members, and any virtual or in person events as they get more familiar in their roles!

BUILDING CONFIDENCE



Facility managers are navigating change faster than ever. RSP's facility information team is here to help.

We uncover, analyze and prepare data to arm your business with the most reliable information for making sound decisions. Now that's building confidence.

RSP

[LEARN MORE ABOUT OUR PROCESS](#) >

Allied
BLACKTOP
CO.

PATCHING PAVING MILLING
RECLAIMING CONCRETE
CHIP SEALING STRIPING
SWEEPING SEALCOATING
AND MUCH MORE

ALLIEDBLACKTOPMN.COM
763.425.0575

PROGRAM UPDATES



During the month of September, we are working on details to host a Deep Dive with Be the Match. If you remember, Elias Lemon and Mike Thorson presented back in May



at a Chapter Meeting about how they were planning to return to the office. Their return has been delayed like many of our plans, but they hope to get more people back into the office in early September. We want to touch base and dive deeper into their return to work plan and see what is working and what has changed. More details to come soon!

Mark your calendar for Wednesday, October 14th, for a presentation touching on the core competencies of Technology and Operation and Maintenance. John Rimer, CFM, a national speaker based out of Charlotte, NC, will be presenting to us virtually. He is not only a certified CRM instructor but has presented many times at World Workplace and Facility Fusion and is excited to share his knowledge and expertise with our chapter. Watch your email for more details to come!



Kill Germs & Viruses

Disinfecting Lighting Technology

Product Details

Contact Kristin Duerr
651-263-4432
For more information

www.retrofitcompanies.com

INSPEC Engineers and Architects Creating Effective Building Envelope Solutions

- Facility Condition Assessments
- Multi-Year Maintenance Budgets
- Design, Design Review/Consultation
- Construction Administration & Observation
- Leakage Investigations/Infrared Surveys

Roofs **Walls and Windows**

Pavements **Waterproofing**

Inspec, Inc.
Minneapolis • Chicago • Milwaukee
<http://www.inspec.com> • (763) 546-3434 • minneapolisinfo@inspec.com

WORLD WORKPLACE



DECEMBER 9 - 11, 2020

GAYLORD TEXAN RESORT HOTEL CONVENTION CENTER

For the safety, convenience and peace of mind of all attendees, IFMA's World Workplace is moving to a self-contained venue this December — one facility, with no overlap from other events. [Read the announcement.](#)

Our community values time together to network and learn, and IFMA is committed to safely and responsibly facilitating sought-after conversations and essential training. [View health and safety protocols.](#)

"We're responding to our community's desire to network and learn in a 'normal' environment," said IFMA President and COO Don Gilpin. "Facility management professionals who have been on the front lines of facility shut-downs and re-entry want to share their experiences with colleagues and gain even more insight into safety procedures and preparedness moving forward. Questions about how best to address challenges presented by the pandemic and other factors impacting the industry are ongoing. IFMA has a commitment to safely and responsibly facilitate necessary conversations and essential training for the benefit of our industry and everyone who enters the built environment."



Early-bird registration, which saves attendees US\$100, will be extended to Sept. 18, 2020. IFMA's cancellation policy has been updated to state that attendees who need to cancel their registration for any reason can receive a 100% refund before Oct. 12, 2020. After this date, they have the option to either transfer registration to World Workplace 2021 or to a colleague.

Learn more about programming, on-site health and safety protocols, speakers and registration options at worldworkplace.ifma.org.

[View schedule at a glance.](#)

**BUILDING ENDURING
RELATIONSHIPS &
STRONG COMMUNITIES**



KRAUS-ANDERSON®

WWW.KRAUSANDERSON.COM



**CELEBRATING 30 YEARS OF
PROVIDING CREATIVE PLANNING
& DESIGN SOLUTIONS FOR
DYNAMIC WORK ENVIRONMENTS**

Marsh & McLennan Agency | Golden Valley, MN

CONTACT:

Paul Carr, AIA
pcarr@mohagenhansen.com | 952.426.7400

mohagenhansen.com





As an active platinum sponsor and member of IFMA for over 20 years, we at Prevolv understand that people are the most important element to the success of your business. Drawing on our extensive experience in the commercial furnishings industry, we have been hard at work partnering with members like you, as well as legacy clients on solutions for a safe return to the office. We firmly support efforts of helping teams feel safe and comfortable in their workspace with meaningful, respectful, and flexible design solutions tailored to their individual needs.

Some areas we have been focusing on are:

- Assessing current office layouts
- Providing design recommendations
- Reconfiguring existing furniture to promote physical social distancing
- Utilize design solutions to divide spaces
- Installing updated design elements
- Creating private spaces for heads down work

We have prepared our own offices and showroom for the safe return of our team as well. We have increased the cleaning regiment of our offices, provided masks for visitors, and have placed hand cleaning stations throughout our showroom to create a space of comfort and commitment to a clean workspace. This summer, we refreshed our 15,000 sq. ft. showroom with new and beautiful furnishings from best in class manufacturers like: OFS, West Elm Work, Inscape and three new vignettes by Pair, a new commercial manufacturer to the Twin Cities featuring modern, flexible, and customizable furnishing solutions. Our COVID19 preparation is firmly in place for those who would like to visit.

We are honored to announce that the Prevolv team was awarded “Best and Brightest Companies to Work For in the Nation 2020”. This premier, employee-driven award competition identifies and honors organizations that display a commitment to excellence in operations and employee enrichment that lead to increased productivity and financial performance. Out of 1700 applicants, we were one of a handful of companies to have received this award. Even through these challenging times, our team collectively rated Prevolv as a top-notch company to work for and we could not be more delighted.

Prevolv continues to look forward to a bright future and to be at the ready to assist successful companies like yours, with their ever-evolving workspace needs.

Please visit our website: www.prevolv.com

prevolv
Evolving your work environment.
Architectural Walls + Open Systems + Private Offices + Filing & Seating
2635 University Ave. West, Suite #120, St. Paul, MN 55114

Furniture solutions for your evolving workspace.

Bill Harris
Manager, New Client Relations
d:651.789.5550 | c:612.581.2507
bharris@prevolv.com
www.prevolv.com

[in](#) [f](#) [ig](#)

UMN & DUNWOODY COURSES AVAILABLE NOW FOR FALL 2020



Fall college classes are now underway at both the University of Minnesota (UMN) and Dunwoody. UMN has changed their Facilities Management (FM) program to be offered every 2 years to take advantage of an FM cohort. All classes able to be offered online allows students to continue learning safely through these challenging times and busy schedules.



DUNWOODY
COLLEGE OF TECHNOLOGY

CFM CREDENTIALS

IFMA'S CERTIFIED FACILITY MANAGER (CFM) CREDENTIAL RECEIVES ANSI ACCREDITATION



Effective June 16, 2020 IFMA's CFM credential was granted accreditation by ANSI National Accreditation Board (ANAB) under the ISO/IE 17024:2012 standard. The CFM credential sets the industry standard for ensuring the knowledge and competence of practicing facility managers. "The program was the first, and remains the only globally respected certification in facility management," said IFMA President and COO Don Gilpin. The process assesses competency in the field through work experience, education and the ability to pass a comprehensive exam covering 11 core competencies of facility management. To pursue this accreditation, find resources and [instructions here](#).

This is a huge achievement, appreciation and support goes out to those promoting the CFM and to the 7,293 individuals who have earned this elite credential!

INDUSTRIAL & COMMERCIAL



SwedeBro

EPOXY FLOOR COATINGS



- Common Areas
- Cafeterias
- Entries
- Fitness Centers
- Manufacturing
- Offices
- Parking Decks & Garages
- Patios & Decks
- Warehouses




Ask us about Anti-Microbial Additives for your floors.

Cory Olson
colson@swedebro.com
763-434-9237 Ext. 1
www.swedebro.com



SOLID[®]
CARE FOR EVERY SURFACE

REPAIR. RESTORE. MAINTAIN.



MOST PEOPLE LOOK UP TO BE INSPIRED. WE LOOK DOWN.

HARD SURFACES

- Natural Stone
- Terrazzo
- Concrete
- Metal
- Wood
- Tile & Grout
- Vinyl & Resilient

SOFT SURFACES

- Carpet
- Fabric
- Leather
- Upholstery

ADDITIONAL SERVICES

- Odor Neutralization
- Antimicrobial
- High-Performance Coatings
- Repair & Restoration

CODY FINNEY
cfinney@solidcare.com
O: 952.698.1687 | C: 612.518.9089
solidcare.com

IFMA MSP'S VIRTUAL ROUNDTABLES



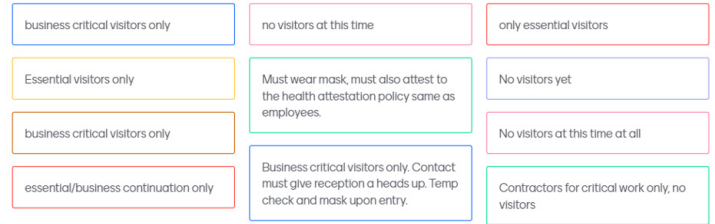
IFMA MSP's virtual roundtables are held twice a month on Thursdays over the lunch hour and continue to be a great success. Rhonda Small has been moderating the sessions using a new online polling tool to allow the viewers to see results instantly on the screen to keep the conversation hot and relevant. With the support of those attending, we have been able to keep the conversation relevant and answer the latest burning questions!

If you have any questions you would like to ask at a virtual roundtable, make sure to email Rhonda directly at Rhonda.small@rsparch.com and she will add them to the conversation and the online poll. Below are some of the fun questions that have led to a great conversation.

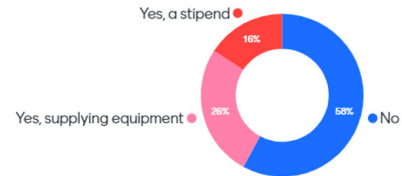
Watch for the next calendar invite and join us to hear how others are helping to answer YOUR burning questions!

What are your visitor policies?

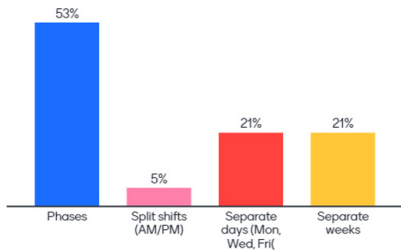
Mentimeter



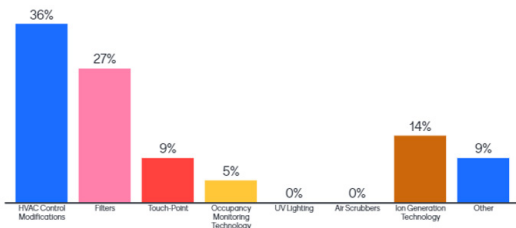
Are you providing employees who work from home furniture?



Which way will you bring people back to the office?



What mechanical changes are you putting in place?



WHAT'S NEXT IN RECOVERY READINESS

Cushman & Wakefield leads the development of best practices, products and partnerships to prepare clients for post-COVID-19 recovery and return to the workplace.

For more information visit cushmanwakefield.com





COVID-19 FACILITY REOPENING GUIDE

As the country continues to face the COVID-19 pandemic and begins planning for the return to the workplace there are several considerations employers and employees need to account for prior to reopening. While details on any expected regulations have been difficult to obtain, it can be expected that individual states will begin providing guidance or even regulations for the safe and healthy return to the workplace. This Facility Reopening Guide provides recommendations based on guidance and regulations from health organizations such as the Centers for Disease Control (CDC), World Health Organization (WHO), Occupational Safety and Health Act (OSHA) of 1970 and state health departments on preparing commercial facilities and businesses for the return to standard business operations.

While the CDC does provide guidance for COVID-19 in workplaces, another important source is OSHA which includes regulations for COVID-19 in the workplace under two clauses and standards.

First, under The General Duty Clause, Section 5(a) (1) of the Occupational Safety and Health (OSH) Act of 1970, 29 USC 654(a)(1), which requires employers to furnish to each worker “employment and a place of employment, which are free from recognized hazards that are causing or are likely to cause death or serious physical harm.”



[Click here to read more!](#)

Also, under OSHA’s Bloodborne Pathogens standard (29 CFR 1910.1030) which applies to occupational exposure to human blood and other potentially infectious materials. Where respirators are required, employers will also have to comply with OSHA’s Respiratory Protection Standard (29 CFR 1910.134). These standards provide clear requirements of companies to provide safe, healthy environments for their employees.

The Nation’s Leading Provider of Commercial Restoration Services

Disaster Hotline: 844-215-7619 • ServiceMasterDSI.com



If you need help preparing to reopen your business, call us at **844-215-7619** or visit us at <https://servicemasterdsi.com/coronavirus-decontamination>



IFMATM Minneapolis/St. Paul Chapter

International Facility Management Association

2020 GOLF TOURNAMENT

TIMES:

September 29, 2020

9:30 am: Registration & Lunch
(grab-n-go)

11:00 am: Shotgun Start

4:30 pm: Optional after golf
networking - details to be announced

COST:

- **Individual Members:** \$130
- **Individual Non-Members:** \$150
- **Member Foursome:** \$500
(foursome must include 1 member & that member must register the foursome)
- **Non-Member Foursome:** \$600

LOCATION:

Legends Golf Club
8670 Credit River Blvd
Prior Lake, MN 55372

REGISTER:

Online: ifma.memberclicks.net/golf-2020-registration

Email: mmccullum@intrinxec.com **Phone:** 952-564-3052

Mail: IFMA • 5353 Wayzata Blvd. • Suite 350 • Minneapolis, MN 55416

MEMBER PROFILE



CHRIS SCHRAM - NATIONAL ACCOUNT EXECUTIVE, SURFACEQUEST



Path to Profession:

Graduate: Interior Design Kendall College of Design | Grand Rapids, MI

Director of Interiors: Jacobsens | Merrillville, IN (Steelcase Dealership)

Account Executive: Lincoln Office | Bloomington IL (Steelcase Dealership)

Business Development Director: Dayton's Commercial Interiors (now Atmosphere) | Minneapolis, MN (Steelcase Dealership)

Director of Business Development: Knoll Inc | Minneapolis, MN (Knoll Corporate)

Account Executive: Henricksen Inc. | Minneapolis, MN (Allsteel Dealership)

Currently National Account Executive: Surfacequest Inc | National HQ Minneapolis, MN (Architectural Fusions)

IFMA Connections & Involvement:

I was one of the 3 founding members of the Central Illinois Chapter of IFMA in 1989.

In 1993 I moved from Central Illinois to Minnesota. One of the first people I reached out to was Blaine Bartz (deceased) the Minneapolis/St. Paul Chapter President at the time. He took me under his wing and introduced me to the greatest people and future friends I would know. I have been on just about every committee within the chapter but most memorable was 8 years co-chairing the Special Events Committee. Moving the golf tournament to Legends and hosting casino nights in the caves in St. Paul.

I have been recognized 3 times as Associate of the Year between Illinois and Minnesota Chapters.

How long an IFMA Member: Since 1989

Recently Completed Project:

International project: I recently have been working on many retail projects but most exciting is the new Under Armour Branded Store being rolled out in North America and Asia Pacific. Our product is featured on the storefronts, bulkheads, feature walls and fitting room doors of all new locations for 2020.

Local Project that members can see: Walk into the lobby of 400 Metropoint at the Interchange Buildings look up and see black and white that is our fusions over existing wood panels. Beautiful use of our product by the NELSON team!

Challenging Aspects of Your Job:

Educating our clients, design team and GC's about how Surfacequest Architectural Fusions can transform spaces overnight.

Family:

Husband: Chuck (independent powersports consultant for Stealth E-Bikes and other e-brands)

Daughter: Cortney (Cerner Corporation, Kansas City),

Son: Cody (Gates Corporation, Denver)

Son-in-law: Matt (Burns & McDonnell, Kansas City)

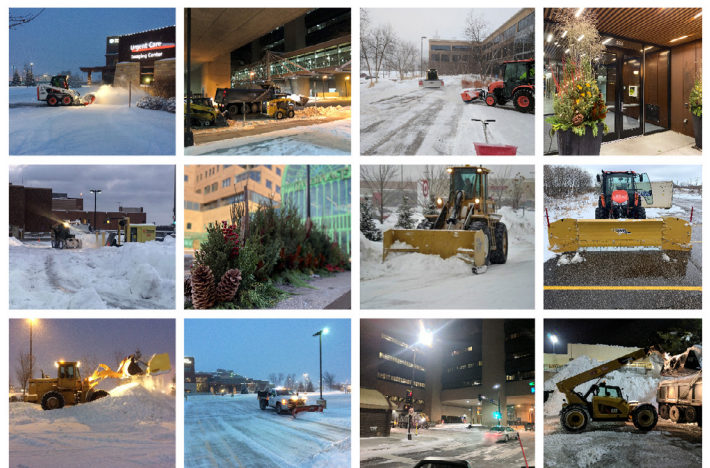
Grandkids: Calia and Cai

Hobbies & Interest:

Cooking, Entertaining, Genealogy, Traveling, Boating and Fishing

Little Known Personal Fact:

I wanted to be in the design industry since 6th grade!



THANK YOU FOR MAKING US YOUR PREFERRED WINTER PROVIDER FOR 40 YEARS
ERIC WALSH VP BUSINESS DEVELOPMENT
651.379.4704 | ericwalsh@rxlandscape.com



MEMBER RECOGNITION



MEMBER ANNIVERSARIES



NEW MEMBERS

35 YEARS

Ian Ellis
CHS

Sharon Harrington
Facility Manager - retired

20 YEARS

Margret Lemkins
Archimea Interior Design
Services, Inc.

15 YEARS

David Nelson
TCF Bank

5 YEARS

Eric Borchardt
DDL, Inc.

Jennie Mork
Coloplast

Timothy Paradis
Prevolv

Trenna Ross
Hennepin County

Rick Seyffer
Goodhue County

Adam Strack
Polaris Industries, Inc.

1 YEAR

William Aegerter
Curtiss Wright Corp.

Alice Chalupsky

Scott Fettig
Klein McCarthy Architects

Connor Lewis
Washington County

Justin McCoy
Polaris Industries, Inc.

Jim Preusse
Veit & Company, Inc.

Mary Schwappach
Thrivent Financial

Paula West

Greg Wohlforth
Paramount Building Solutions

Nathan Bauer

A&M Business Interior
Services

Rose Ellingson
Barr Engineering

Todd Goldwasser
Commercial Flooring
Services

Todd Leonard

Samantha Porter
Minnesota Valley Transit
Authority

Linda Tank
CHS



PRODUCT & INSTALLATION
Flooring
Furniture
Window Treatments
Wallcoverings

MAINTENANCE
Flooring
Upholstery
Terrazzo Polishing
Urethane Coatings
Construction Clean-up

INTERIOR DESIGN
Concept Development
Space Planning
Project Management



BEFORE



AFTER

At the end of the day, building relationships, that's what we do.

(651) 681-8100 • 940 Apollo Road, Ste 110 • Eagan, MN 55121
www.cfs-floors.com

Designing places that strengthen
communities and inspire **innovation**



Get to Know Us

ALLIANCE

2020 SPONSORS



PLATINUM



GOLD



KRAUS-ANDERSON®



SILVER

