

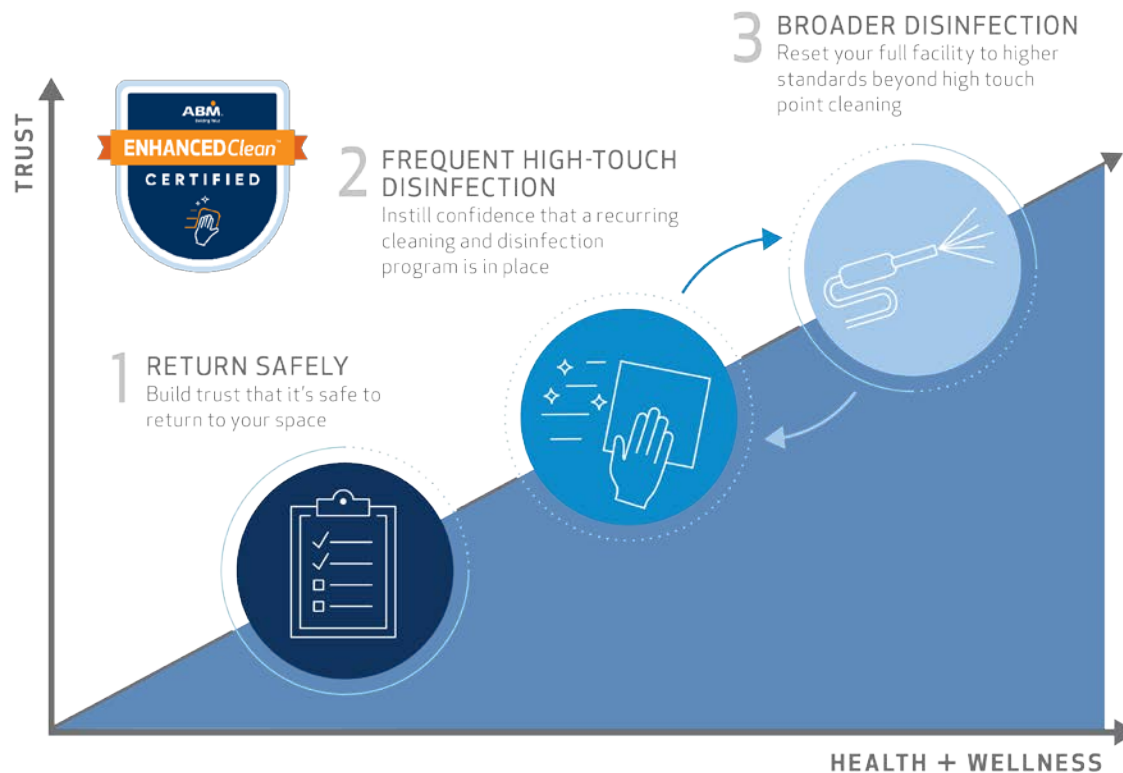


Preparing Facilities for
Re-Occupancy &
The New Normal

ABM EnhancedClean

ABM EnhancedClean™

ABM's EnhancedClean™ program is a three-step approach that delivers healthy spaces with a certified disinfection process backed by experts.



KEY DIFFERENTIATORS:

- Certified Processes Backed by Experts
- Hospital Grade Disinfectants & Specialized Equipment
- Innovative Solutions including Evidence Based Testing

The Right Approach at the Right Time

	Suggested Frequency	Methods Employed	Team Members Deployed	Potential Supplies and Equipment
<p>Step 1: Return Safely</p> <p>Build trust that it's safe to return to your space.</p>	Intervals based on timing of reentry	<ul style="list-style-type: none"> Pre-opening site assessment(s) using reentry checklists to inform return to work strategy New workforce protocols (i.e. social distancing procedures, health screening, PPE requirements) Reentry disinfection service using EPA-registered disinfectants 	Certified disinfection specialists	<ul style="list-style-type: none"> Touchless fixtures, dispensers & door openers Centralized trash receptacles Sensor technologies Hand-sanitizing stations (based on availability) Disinfecting wipes for occupants (based on availability)
<p>Step 2: Frequent High Touch Disinfection</p> <p>Instill confidence that a recurring cleaning and disinfection program is in place</p>	Intervals range from hourly to daily	<ul style="list-style-type: none"> Site specific SOW for each facility type based on occupancy levels Increased frequency of disinfection of all high touch point areas in facility 	Certified disinfection specialists	<ul style="list-style-type: none"> Occupant Reentry Communication Kits EPA-registered disinfectants Proper PPE Microfiber program
<p>Step 3: Broader Disinfection</p> <p>Reset your full facility to higher standards beyond high touch point cleaning</p>	Intervals range from nightly to quarterly	<ul style="list-style-type: none"> Large area disinfection using electrostatic spraying 	Certified disinfection specialists	<ul style="list-style-type: none"> Electrostatic sprayers Hospital grade, EPA-registered disinfectants with faster kill time and broader pathogen spectrum <p>Continued product testing:</p> <ul style="list-style-type: none"> Evidence-based testing and validation UV devices and UVC lighting



EnhancedClean™ Package Levels



Level 1

Level 2

Level 3

Reentry Services

- Reentry site assessment
- New workforce protocols
- **1x disinfection** timed with reentry

- Reentry site assessment
- New workforce protocols
- **1x disinfection** timed with reentry

- Reentry site assessment
- New workforce protocols
- **1x disinfection** timed with reentry

Daily Enhanced Scope - Days

- Facility communication kits
- Damp wipe disinfect high-touch areas **3x - 5x per day**

- Facility communication kits
- Damp wipe disinfect high-touch areas **6x - 8x per day**

- Facility communication kits
- Damp wipe disinfect high-touch areas **10x - 12x per day**

Daily Enhanced Scope - Nights

- Enhance SOW by replacing general purpose cleaner with disinfectant for nightly cleaning **1x per week**

- Enhance SOW by replacing general purpose cleaner with disinfectant for nightly cleaning **3x per week**

- Enhance SOW by replacing general purpose cleaner with disinfectant for nightly cleaning **5x per week**

Broad Disinfection Services

- **Bi-weekly** broad disinfection service using electrostatic spray application

- **Weekly** broad disinfection service using electrostatic spray application

- **Daily** broad disinfection service using electrostatic spray application



ABM Enhanced Clean Advisory Council



Ruth Carrico

Associate Professor, Global Health Program Director,
University of Louisville School of Medicine

Key Specialty: Infection Prevention



Nancy McClellan

Globally recognized expert, former Industrial Hygienist at
LafargeHolcim and AbbVie; M.P.H., CIH, CHMM

Key Specialty: Industrial Hygiene



Cathy Campbell

National Director of Service Delivery (B&I); CHESP, CMIP

Key Specialty: Healthcare



Gordon Buntrock

National Director of Service Delivery (EDU)

Key Specialty: Janitorial

Guidance and development of:



Standard Operating Procedures

Reviews and validates all SOPs relevant for
ABM's COVID response and EC offering



Program Development and Tech Vetting

Develops the framework for implementing
Evidence Based Testing (ATP) and product
vetting for UV light technology



Program Certification Build

Defines approach for program certification and
validates disinfection specialist certification and
training program



Position Paper Development

Develops, documents, and reviews ABM's
position on key topics, such as electrostatic
sprayers and antimicrobial coatings





What do we mean by certification?



Certified Team Members

Disinfection specialists performing frequent high touch disinfection and those required to use electrostatic sprayers will receive formal certifications based on tested comprehension and ability to perform the tasks through observation

Certified program

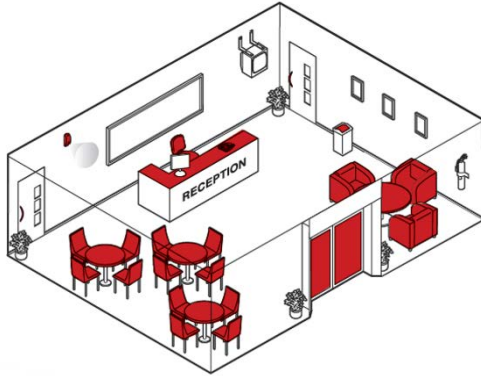
Program certification will validate that our locations are prepared for the post-COVID world by ensuring adherence to key processes

- Standard Operating Procedures
- Risk Hazard Assessments
- Facility Communication Plan
- Equipment, Supplies, and PPE Screening Protocols
- Equipment, Supplies, and PPE Inventory Management
- Respiratory Protection Program
- Health Screening Program
- Emergency Response Program

Frequent High Touchpoint Disinfection



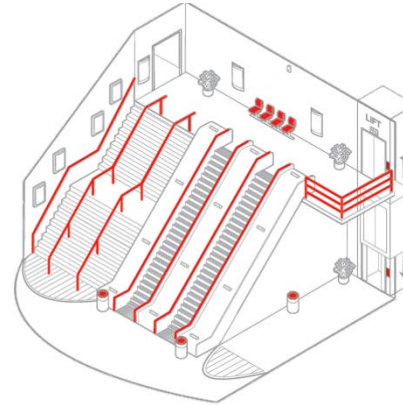
Public Areas / Reception / Lobbies



Touchpoints:

- door handles
- switches
- dispensers (loaded, in good order, clean)
- table tops / reception surface
- telephone
- water fountain
- armrests

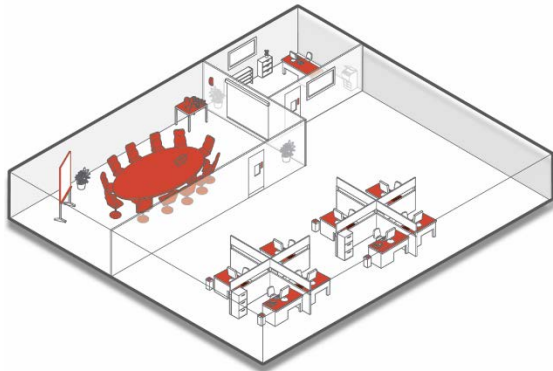
Lift / Stairs / Escalator



Touchpoints:

- door handles
- switches
- handrails
- lift buttons

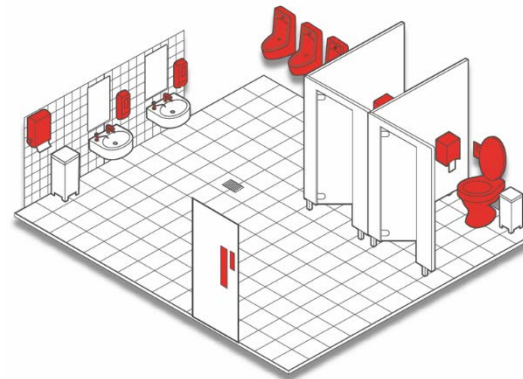
Office / Conference Areas



Touchpoints:

- telephones
- chairs
- desks
- table tops
- switches
- door handles
- metal surfaces

Restrooms



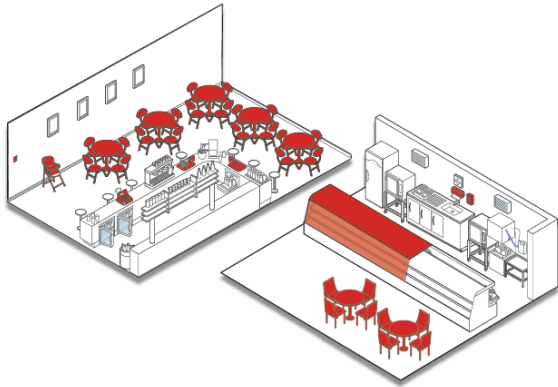
Touchpoints:

- door handles
- switches
- dispensers, paper towel holders
- bathroom handles, toilet flush, shower control, taps
- toilet seats, splash walls

Source: Johnson Diversey Safe Building Program

Frequent High Touchpoint Disinfection **ENHANCED Clean™**

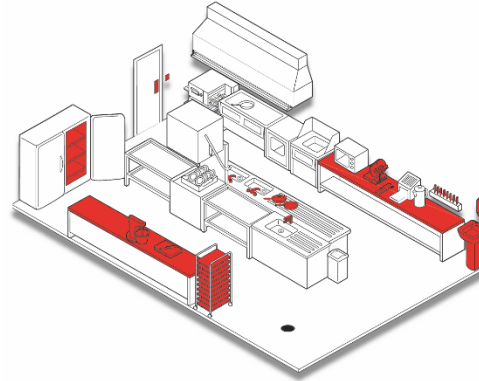
Food Service Area



Touchpoints:

-  all handles (not only doors)
-  switches
-  dispensers
-  food contact surfaces
-  hand contact areas

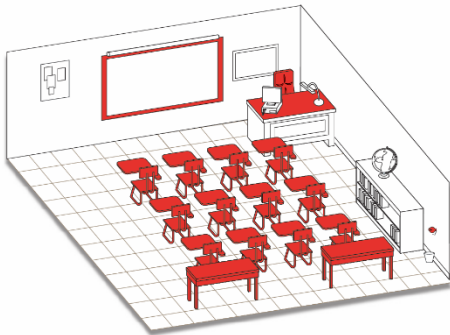
Kitchens



Touchpoints:

-  door handles
-  switches
-  dispensers (loaded, in good order, clean)
-  food contact surfaces
-  hand contact areas
-  taps
-  utensils

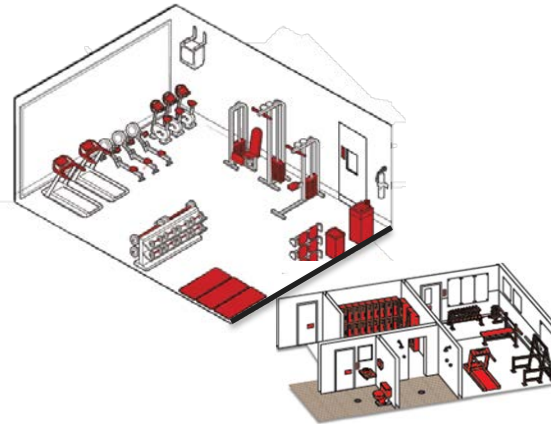
Training Rooms



Touchpoints:

-  telephones / computers / electronics (as approved)
-  desks / tables
-  switches
-  door handles
-  chairs
-  pencil sharpener / metal surfaces

Gyms / Locker Rooms



Touchpoints:

-  door handles
-  switches
-  water fountain
-  handle and seat of the machine
-  toilet seats and flush handles, splash walls
-  locker exterior
-  dispensers

Source: Johnson Diversey Safe Building Program

Visual Assurance

Building Brand Trust Through Communication Tools

Communication Kits will be provided at the onset of this step to proactively illustrate the tangible benefits of the program, including:

Entryway Easel Signs



Break Area Tent Cards & Floor Clings



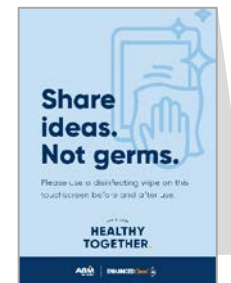
Desk Drops



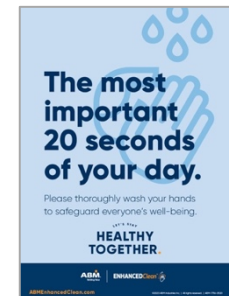
Recently Disinfected Space Signs



Touch Screen Tent Cards



Restroom Mirror Clings





Thank You!

We appreciate your business,
and value our relationship.

